

# SAKRET Edge insulation strips

RDS

Self-adhesive insulation strip for the sound-bridge-free installation of floor levelling compounds

## Application areas:

On raw concrete floors, floating screeds, screeds on separating layers, wooden planks and chipboard floors, as well as old stone and ceramic coverings.  
Especially for renovation and thin bed systems.  
Prevents sound bridges and forced tensions.



- For floor
- For indoors

## Properties:

- Self-adhesive foot for easy mounting
- Safe and simple corner formation
- Perfect fixation on walls
- Rot-free
- Elastic

## Material basis:

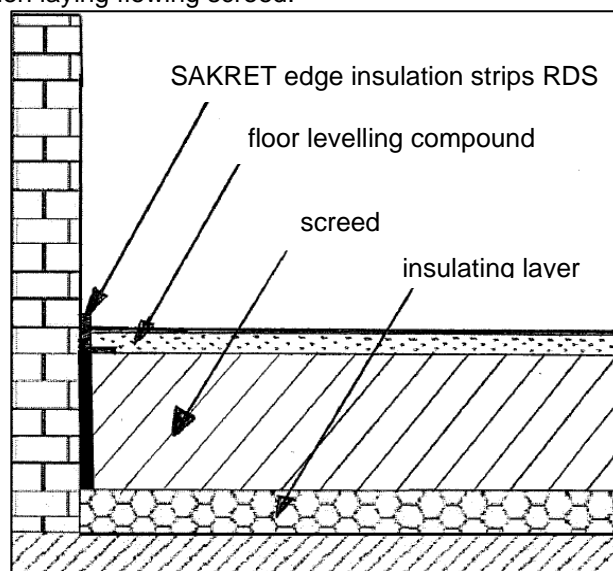
- PE insulation strips with integrated fleece

## Technical data:

Material strength	5 mm
Height	50 mm
Length	20 m $\pm$ 5%

## Working:

Cut SAKRET edge insulation strips for floor levelling compounds RDS to the required length using scissors or a sharp knife (cutter).  
The stable fixing is carried out with the adhesive strip on the load-bearing substrate, so that a change of position when placing screed is prevented.  
Optionally, a second adhesive strip can be applied to the upper side of the stand, so that the border layer/cover foil can be fixed safely and easily when laying flowing screed.





## SAKRET Edge insulation strips

**RDS**

<b>Material consumption:</b>	<ul style="list-style-type: none"> <li>On demand</li> </ul>
<b>Packaging:</b>	<ul style="list-style-type: none"> <li>5 pieces in carton - delivery only in cartons</li> </ul>
<b>Waste management:</b>	Non-contaminated residues can be recycled or disposed of as public waste. Dispose of contaminated material according to official guidelines.
<b>Storage:</b>	<ul style="list-style-type: none"> <li>Cool and dry</li> <li>In original packaging storable for ca.12 months</li> </ul>
<b>Note:</b>	<ul style="list-style-type: none"> <li>For the work to be performed, the relevant recommendations, guidelines, standards and regulations as well as the generally accepted rules of technology must be taken into account.</li> </ul>

During execution of work the relevant recommendations and guidelines, rules and standards, relevant technical instruction leaflets as well as the acknowledged rules of architecture and engineering have to be regarded. We do not have any influence on different weather/substrate and object conditions. Our written and spoken application/technological recommendations handed out to customers and craftsmen respectively are without obligation and do not constitute any contractual legal relationship and no lateral duty of a sales contract. All indications and recommendations of technical data sheets refer to standard purpose of use. With the publication of this technical instruction sheet, the previous ones lose their validity. This is a translation. Please refer in any case of misunderstanding the relevant German technical data sheet. Ed. 30.05.2022